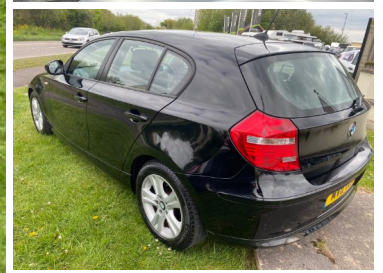


SOMERSET MOTOR EXCHANGE

2011(11) BMW 1 Series 116d SE 5dr

SOLD



Engine: Diesel
Body: Hatchback
Gearbox: Manual
Capacity: 1995cc
Colour: Black
Mileage: 135,000
CO²: 118g/km
MPG: 62.8mpg
Top Speed: 124mph
BHP: 114bhp
Insurance Grp: 20E

Somerset Motor Exchange
 Bridgwater Road
 Lympsham
 Weston-Super-Mare
 North Somerset, BS24 0BN

| | |
|---|---|
| FULL SERVICE HISTORY | 16" ALLOYS |
| 'LIGHTS ON' REMINDER WARNING BUZZER | BRAKE FORCE DISPLAY |
| ON BOARD COMPUTER | ENGINE START/STOP BUTTON |
| OUTSIDE TEMPERATURE DISPLAY | ON BOARD DIAGNOSTICS |
| SERVICE INTERVAL INDICATOR | REAR PARKING DISTANCE CONTROL |
| AUXILIARY POINT FOR AUXILIARY DEVICES | DIESEL PARTICULATE FILTER |
| ELECTRIC FRONT WINDOWS + ONE TOUCH + ANTI-PINCH | BODY COLOUR BUMPERS |
| FRONT FOG LAMPS | BODY COLOUR DOOR HANDLES |
| HEATED WINDSCREEN WASHER JETS | ELECTRIC REAR WINDOWS |
| 3 SPOKE SPORTS LEATHER STEERING WHEEL | ELECTRICALLY ADJUSTABLE DOOR MIRRORS |
| DRIVER/PASSENGER SUNVISORS WITH TICKET HOLDERS | HEATED DOOR MIRRORS |
| FOLDING REAR SEAT HEAD RESTS | REAR WASH/WIPE |
| FRONT/REAR COURTESY LIGHTS | WINDSCREEN WIPERS WITH ADJUSTABLE INTERVAL |
| | 60/40 SPLIT REAR SEATS |
| | AUTOMATIC AIR CONDITIONING |
| | FLOOR MATS |
| | FOLDING FRONT CENTRE ARMREST + STORAGE |
| | HEAD RESTRAINTS |
| | FRONT ISOFIX ATTACHMENT + AIRBAG DEACTIVATION |
| | ISOFIX REAR CHILD SEAT |

Call:01934 815454 | www.somersetmotorexchange.co.uk